

# ANNUAL REPORT 2018-2019



Spinal Cord Injury Saskatchewan Inc.  
Lésions Médullaires Saskatchewan



**COMMITTED TO COMMUNITY**



## BOARD OF DIRECTORS

### EXECUTIVE

William Lehne \* President  
Monique Beauregard Vice President  
Arvid Kuhnle\* Secretary  
Denise Thibault\* Treasurer  
Lynn Archdekin\* Past President

### DIRECTORS AT LARGE

Lana George\*  
Jaqueline Kraushaar  
Shane Wunder  
James Allonby\*

### HONORARY BOARD DIRECTORS

Dr. L. Lavoie  
Dr. Robert Capp

\* Indicates director with a physical disability

## HUMAN RESOURCES TEAM

### ADMINISTRATION

Launel J. Scott Executive Director  
Larry Carlson Regional Coordinator  
Mallory Maurice Admin Coordinator

### DIRECT CLIENT SERVICE

Blake Lamontagne CSC  
Dafydd Herbert AEC (term)  
Delynne Bortis CSC  
Colin Farnan CSC  
Kristin Drummond CSC  
Mark Kennedy AEC (term)

### FUND DEVELOPMENT

Aaron Wright (term)

### DEPARTURES

Dwayne Main Finance Manager  
Sandy Doran Regional Manager

## MISSION

To assist persons with spinal cord injuries and other physical disabilities to achieve independence, self-reliance and full community participation.

## VISION

Working collaboratively for inclusive communities.

## SERVICES

### Rehabilitation Services

Connection and counsel with individuals, who experience a spinal cord injury or other physical disability, and their families to support adaptation and reintegration into each respective community; peer mentorship network; assist with the navigation of systems and service coordination; and provide referrals and information. SCI offers opportunities that focus on the physical, emotional and social well-being of individuals living with a physical disability.

### Education and Employment Services

Guidance in the areas of work readiness, career decision making and skill enhancements. SCI Sask offers accessibility consultations, wage subsidies, and funding for disability accommodation to advance education and employment.

### Community Inclusion & Awareness

Collaboration and networking with key stakeholders and committee participation. SCI Sask offers awareness and inclusion facilitation, strategic planning and government consultations to identify and reduce barriers with the goal of achieving enhancements towards full community participation.

### Information Services

Comprehensive and relevant information and resources for employers, community agencies, governments and the general public on accessibility, universal design and inclusion.



## PRESIDENT'S MESSAGE

SCI SK continues to provide innovative strategies to build community partnerships that complement our existing organizational capacity. It's important that SCI Sask pursues partnership activities to instill and embrace values of working as a collective for community inclusivity to capitalize on future service delivery opportunities.

SCI Sask is proud to showcase our charitable success is attributed to the vast volunteerism, stakeholder investment, corporate support, and government collaboration that contributed to SCI Sask overall 2018-2019 achievements.

On behalf of the Spinal Cord Injury Sask Board of Directors, I would like to recognize and thank the outstanding commitment of those many volunteers that contributed resources and supports that empower our growing membership. Our board reviews, revises, and expands its governance process to ensure we meet our fiduciary duty regarding the due diligence of stewardship & protecting the integrity of the organization.

The continued evolution of the landscape dictated by public policy requires an SCI Sask Team that is responsive & adaptive to meet the growing expectations of community service delivery. Our Indigenous strategy is expanding beyond the urbanized boundary dictating an increased need for supportive resources to meet the growing demand for community outreach programming.

The content in the following pages will provide greater details regarding the annual report and solutions the SCI Sask TEAM have undertaken in this past fiscal to meet our mission statement "To assist persons with spinal cord injuries and other physical disabilities to achieve independence, self-reliance and full community participation."



Bill Lehne, President, Board of Directors

## EXECUTIVE DIRECTOR'S MESSAGE

The Mission, Vision and Strategic Objectives form the pathway for the SCI Sask Human Resources Team to travel throughout the year in the delivery of services, initiatives, network and partnership development. Over the 2018-19 year, our team committed to recapturing these core foundations in order to strengthen our community recognition and service identity.

The Provincial HR Team gathered in the fall of 2018 to review our strategies and determine the possibilities to magnify our strengths and opportunities. We even hosted our own version of "dragon's den" where team members imagined amazing innovations to examine, through "R and D" (research and development) and bring to actualization in the efforts towards independence, self-reliance and full community participation. Each of the initiatives undertaken in 2018-19 acted as a catalyst to move forward in the upcoming year, each contributing to enhancements in accessibility, awareness of persons living with spinal cord injury and other physical disabilities. Partnerships were forged with invested organizations, key stakeholders, the business community and aligned with national, provincial and municipal initiatives. These partnerships and collaborations, initiated and re-affirmed particularly over the course in 2018-19, will continue into the future of advancing accessibility, inclusion and full community participation.

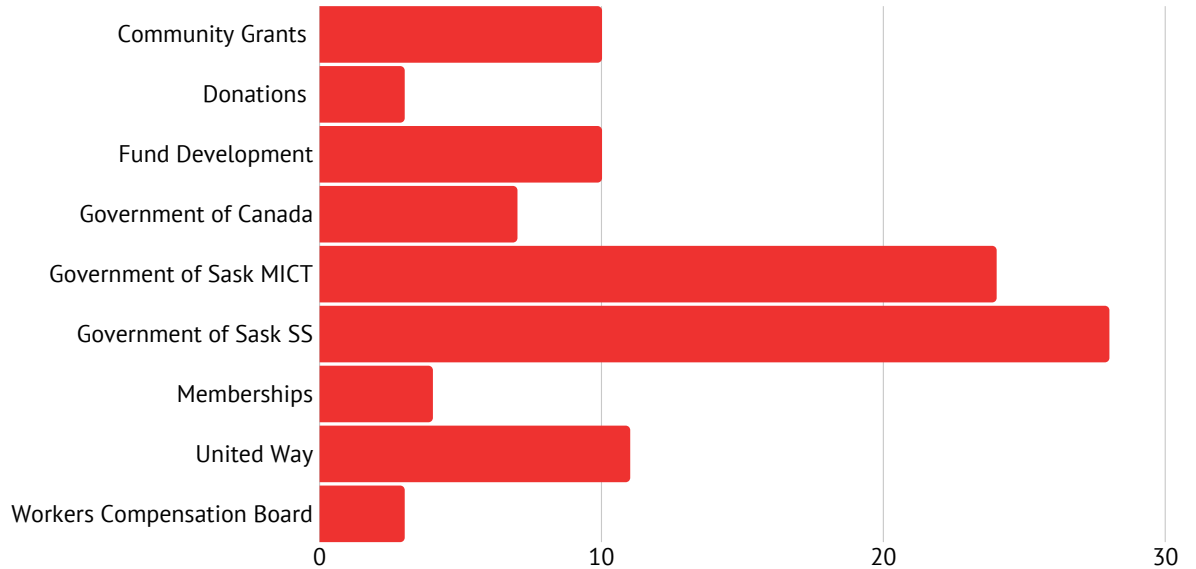
Thank you to the SCI Saskatchewan Board of Directors for their Leadership and Support. Thank you to our dedicated Provincial Human Resources Team in Regina and Saskatoon, both employees and contractors, for the contribution and passion demonstrated in fully achieving our mandate and enhancing our services to meet the needs of individuals and Saskatchewan Communities.



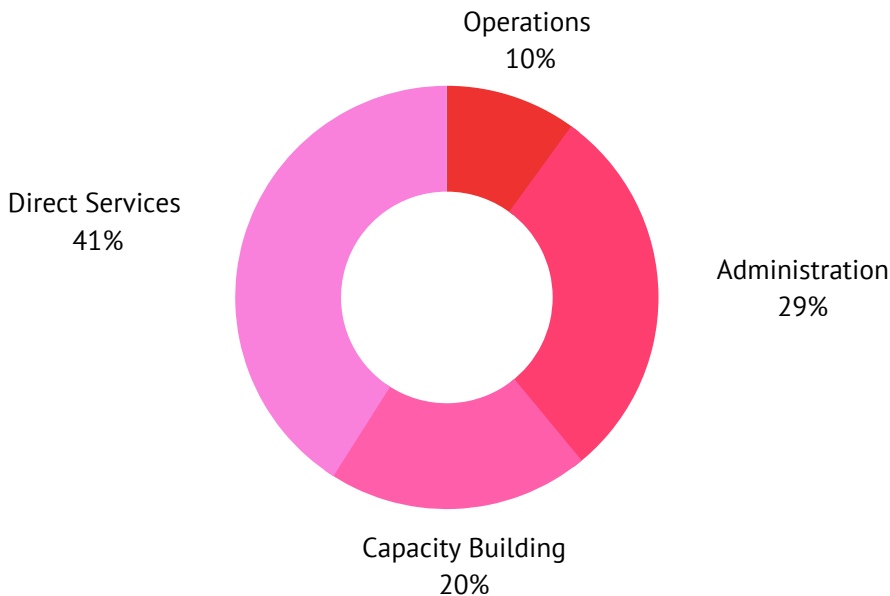
Launel J. Scott, Executive Director

# FINANCIAL OVERVIEW 2018-2019

## REVENUE



## EXPENSES



### Description of Revenue Categories

- Government of Canada
  - Employment and Social Development
- Government of Saskatchewan
  - Ministry of Immigration and Career Training
  - Ministry of Social Services
- Community Grants
  - Community Initiatives Fund
  - City of Saskatoon and SK Lotteries
  - City of Regina and SK Lotteries
  - South Saskatchewan Community Foundation
- Membership to SCI Sask
  - Benefit-based and available to persons living with a physical disability
- Donations
  - clients/members/families; public and patrons; donor's choice
- Fund and Resource Development
  - Events Wheelchair Relay, ChairLeaders, Golf Tournaments
  - Foundations
  - Corporate Memberships
- Workers Compensation Board
  - To support to individuals injured at work
- United Way
  - Estevan
  - Saskatoon
  - Weyburn

For complete audited financial statements please contact SCI Sask at [sciinfo@scisask.ca](mailto:sciinfo@scisask.ca)

## COMMITTED TO FOSTERING RELATIONSHIPS IN URBAN AND RURAL INDIGENOUS COMMUNITIES

SCI Sask commits to engaging with indigenous communities across the province. Through the Adapt Adjust Thrive (AAT) initiative with support from The Community Initiatives Fund, SCI Sask reached Indigenous Individuals through group and one-to-one sessions to address health status, access to services, reduction of attitudinal and environmental barriers, and how systems can close the gap to ensure culturally responsive, appropriate and timely supports are available in each respective community.

SCI Sask commits to fostering relationships in both urban and rural Indigenous Communities to realize sustainable improvements in awareness and inclusion of people living with disabilities, and to support reconciliatory actions that are conducive to inclusivity and support activities inherent to the Indigenous Culture.



Aboriginal Engagement Coordinator Mark Kennedy participates in the official opening of the Muskoday First Nation Community School Accessible Playground



Saskatoon Peer Group enjoys a shopping excursion

SCI Sask believes peer engagement is vital to the well-being of all individuals. SCI SASK offered a number of initiatives in 2018-2019 to engage our clients in a variety of peer events, adapted activities and opportunities to promote positive lifestyle changes for individuals with physical disabilities.

The “Pilates, Photography and Personal Progress” Project, delivered through support from the City of Saskatoon and SK Lotteries, provided the opportunity to learn, be active and join with community peers who could support and relate to one another.

“Adapted Peer Movement Events” delivered in partnership with other community-based organizations, funded by the City of Regina and SK Lotteries brought adaptations to a variety of new activities for individuals to experience including rowing, tennis, tai chi, gardening, golfing, fencing, pilates and yoga.

Commitment to these opportunities, plus the daily work of our client service coordinators fosters a difference in the lives of our clients, connects to a community of support, improves well-being and enhances quality of life.

## COMMITTED TO PEER MENTORING AND ENGAGEMENT



Group of participants at a community conversation in Moose Jaw with client service coordinators Kristin Drummond and Larry Carlson



SCI Sask believes that society benefits when everyone can participate fully in their workplaces and communities. Through the Awareness Saskatchewan Initiative, SCI Sask took that message across the province to promote the benefits when businesses and workplaces are universally accessible. In 2018 to 2019, twenty Chambers of Commerce, four Tribal Councils and ten Rotary Clubs heard the message of accessibility awareness. The Awareness Saskatchewan initiative fostered attitudinal changes towards full inclusion for individuals living with spinal cord injuries and other physical disabilities.

Through conversations across cities in Southern Saskatchewan, Vital Community Conversations participants shared the desire for communities to be inclusive and welcoming. These opportunities started a dialogue to gain vital information from individuals about what inclusive communities can look like and how we can work to create more inclusive, welcoming communities.



SCI Sask continues to partner and collaborate with invested organizations and agencies to develop community inclusion and comprehensive service delivery through system improvements.

- Disability Income Support Coalition
- Disability Service Alliance
- Federal Accessibility Legislation Alliance
- First Steps Wellness Centre
- Office of Disability Issues
- Office of Health Innovation
- Patient Oriented Research Team
- Saskatchewan Wheelchair Sports Association
- Saskatoon Accessibility Advisory Committee
- Saskatoon City Hospital Rehab
- Sherbrooke Community Centre Art Studio
- Rick Hansen Institute
- University of Regina
- University of Saskatchewan
- Wascana Rehabilitation Centre

### Saskatchewan Spinal Cord Injury Strategy

SCI Sask is part of the Provincial SCI Network Development. This strategy will support information sharing, coordinate care and implement best practices. The goal is to achieve a province-wide, multi-disciplinary network of SCI specialists of community service workers, individuals living with an SCI, health care practitioners and policy makers, working together to optimize care and outcomes for Saskatchewan citizens living with an SCI.

- Strategy Collaborators:
- University of Saskatchewan
  - College of Medicine
  - SK Health Research Foundation
  - Rick Hansen Institute
  - Spinal Cord Injury Saskatchewan

# COMMITTED TO DIVERSE AND SUSTAINABLE FUNDING AND RESOURCES

It was a year of change for the **SCI SASK Wheelchair Relay**. The event returned to Regina after many years of hiatus and the Saskatoon Relay was held outdoors for the first time ever on a snowy Saturday in September! This fun family friendly event continues to promote inclusivity and contributes to raising essential funds for service delivery across the province.

The growth of the **LA Charities Golf Tournament** established resources to develop an LA Charities Scholarship Fund, with its first application in July and dispersal scheduled for the fall of 2019.

**ChairLeaders** continues to promote opportunities for workplaces and businesses to gain a new perspective on the challenges and barriers of workplace accessibility. Once again individuals from Saskatoon and Regina took up the challenge and spent a morning in a wheelchair to raise funds and awareness for SCI Sask.

Thank you to all the participants, volunteers, supporters and sponsors that makes these events possible throughout the year.



Michelle Van Os volunteers with the raffle sale at the Regina Wheelchair Relay November 2018



"Hot Rollers" wheel in the Saskatoon Wheelchair Relay September 2018



Andrew Arguin and Chris Letts present the LA Charities Golf Tournament proceeds to Laurel Scott SCI Sask ED



CSC Blake Lamontagne provides Wheelchair Safety at the Regina ChairLeaders event May 2018



Never too young to learn about accessibility at the Regina Wheelchair Relay November 2018

# THANK YOU TO OUR FUNDERS, SUPPORTERS AND SPONSORS

## MAJOR FUNDERS



## FINANCIAL SUPPORTERS



## EVENT SPONSORS

Bayshore Home Health  
Churchill's British Imports  
Coloplast  
CTV News  
Express Employment Specialists  
Gabriel Dumont Technical Institute  
Gold's Gym Regina

Golden Mobility  
Jump.ca  
Mid-West Automotive Company  
Mulberry's Saskatoon  
New Rock Developments  
Prairie Heart Mobility Regina  
Prairie Meats Saskatoon

Rawlco Radio  
RBC Dominion Securities  
RBC Financial  
Sask Power  
Tweak Signage  
Uro Medical Supplies  
Worker's Compensation Board

Questions or comments about this publication or services offered by Spinal Cord Injury Saskatchewan should be directed to:



Spinal Cord Injury Saskatchewan Inc.  
Lésions Médullaires Saskatchewan

**Provincial Office**  
311 38th Street  
Saskatoon SK S7k 0T1  
Phone 306.652.9644  
Fax 306.652.2957  
sciinfo@scisask.ca